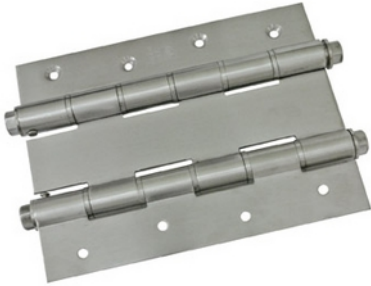




Always close to you.

Double effect spring hinge mod.3033



Characteristics



Automatic closing of the door

Adjustable closing power

High resistance to twisting

With allen key

For doors of 35 mm maximum thickness

No. of hinges:2/weight of the door to:40 kgs/width of the door to:80 cms

No. of hinges:3/weight of the door to:70 kgs/width of the door to:80 cms

No. of hinges:4/weight of the door to:90 kgs/width of the door to:80 cms

Finish

stainless steel aisi 304

Sizes

180x135x3 mm

Cod.



5179



4



12

Cod.



2459



1



4



24

