

# ABLOY® CAM LOCK ACCESSORIES

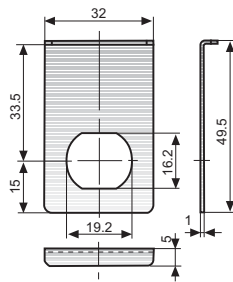
## CAMS

For cam locks in the universal range, three different cam models available: straight, hooked and offset. Cams are made of zinc-plated steel. Cams for the US range of cam locks are available in the US sales office.

Straight cam	Part No.	A	B	Offset cam	Part No.	A	B	C
	455608	26	18		455678	32	24	13.3
	434815	30.5	22.5		434959	33	25	26.5
	434869	33	25		455333	35	27	5
	455322	35	27		434928	35	27	6.5
	434609	38	30		455499	35	27	9.5
	434794	40	32		455525	35	27	10.5
	455556	45	37		434816	36	28	12
	455548	48	40		434799	36	28	22
	455494	53	45		455557	37	29	18.5
	455797	58	50		434766	38	30	15
455606	68	60	434667	38	30	7		
435097	40	32	5	434702	40	32	19	
<th>Hooked cam</th> <th>Part No.</th> <th>A</th> <th>B</th> <th>C</th>	Hooked cam	Part No.	A	B	C			
		455514	31	23	16.5			
	434605	32	24	17.5				
	455332	35	27	20.5				
	455492	42.5	34.5	28				
	434818	47.5	39.5	33				
	455780	58	50	43.5				
	455549	60.5	52.5	46				

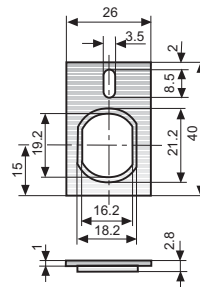
## FITTING PLATES

Fitting plates are made of zinc-plated steel and should be ordered separately.



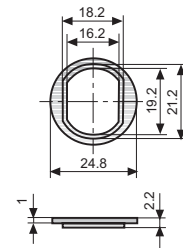
413807

- For use with plastic ring 4841003 in glass doors.
- Available also with brass finish, product number 413808



455328

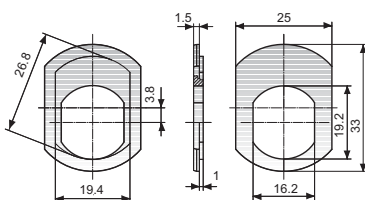
- Used inside of a wooden door to prevent the lock from rotating
- Fixed by screws through the upper holes of the plate



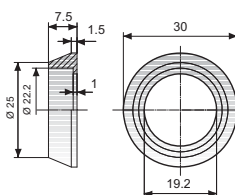
434613

- Used mostly as replacement for cam locks of universal specifications
- Normally used on both sides of the mounting hole

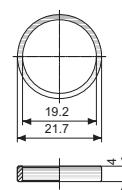
## SPECIAL ACCESSORIES



Fitting plate 441345



Protective collar 804757



Lifting sleeve 804252